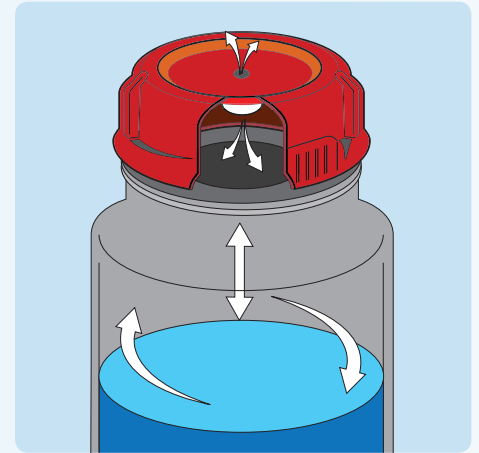
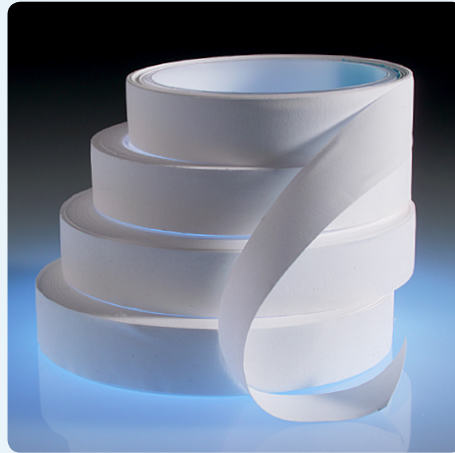
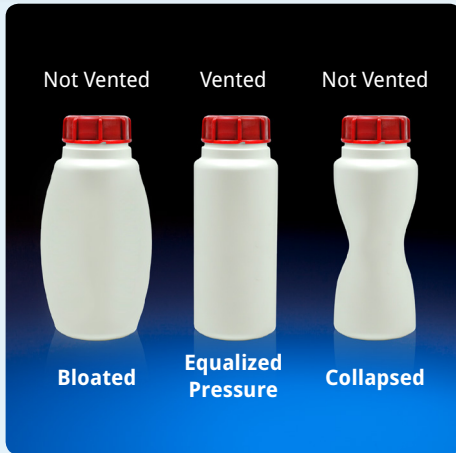
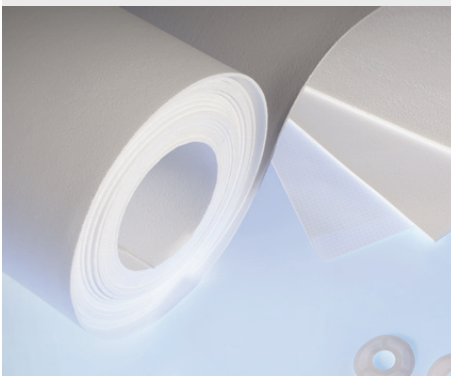


POREX® Vents For Cap Closures & Liners



Key Features

- Engineered high airflow
- Excellent chemical resistance
- Hydrophobic
- Multiple assembly options
- Standard product formats
- Oleophobic treatment (optional for PTFE)



Why Porex vents are needed...

Many industrial and consumer container products can become bloated, collapsed or even explode due to unequalized pressure during processing, transportation or storage. Porex vents are designed to enable the container to “breathe” and thereby equalize pressure within the container, preventing distortion and damage of the container.

Porex has developed several material selections of porous plastic vents that address industrial and consumer packaging requirements allowing for container integrity. Porex porous polytetrafluoroethylene (PTFE) is a weldable, breathable, leak-resistant material solution for industrial and consumer vented liners and cap closures. It is designed for use with solvent or water-based solutions, granular or powder chemicals, food and beverage, or for use with low surface tension fluids such as oils, detergents, surfactants, and more. Porex polyethylene (PE) and polypropylene (PP) vent materials are also available based on the application temperature, liquid and chemical properties of the material within the container.

Properties	PTFE*	PP	PE
Heat Resistance (softening point)	260°C	172°C	130°C
Heat Resistance (melting point)	>260°C	193°C	160°C
Hydrophobicity	Excellent	Good	Good
Oleophobicity	Available upon request	N/A	N/A
Geometry	Sheet/vent plug/disc	Sheet/vent plug	Sheet/vent plug

*PTFE compliant with UN Dangerous Goods Packaging Performance Standard: Part 6.1.5 of Chapter 6.1 of the United Nations Model Regulations, 15th Edition

Material Performance

Product #	Material	Water Intrusion Pressure (mbar) -Typical-	Airflow (l/hr/cm ² @ 10 mbar) -Typical-	Thickness (mm)
96193	PE	150	14	0.7
9619	PE	150	10	1.5
9948	PE	180	7	3.1
PM3V	PTFE	400	9	0.18
PM22S	PTFE	525	8	0.25
PM6M	PTFE	770	3	0.1

PTFE Material Format

Porex PTFE is a sintered material with excellent strength properties allowing for vigorous handling during assembly. Porex PTFE does not require a reinforced backing, but this option is available upon request. In addition, both sides of the vent material are the same, which does not require special orientation during assembly.

Porex PTFE features include:

- Standard roll is 330 mm wide
- Slit rolls available
- A4 and A5 sheets
- Die cut discs
- Die cut parts with adhesive backing

Assembly Options for Porex Vents

Press-Fit Plug (PE/PP, PTFE)

Press-fit plug type is an easy assembly method that “conforms” the material to the desired shape. There is no welding process required for this type of assembly method.

Ultra-Sonic Weld or Heat Seal (Discs/Membrane)

Ultra-Sonic welding or heat sealing require welding of the vent material directly to the cap or the liner. Porex can supply either in disc form (loose or with adhesive backing), A4 sheet form, or in a standard roll form for this type of assembly method.



Venting hole



Press-Fit plug cap



Ultra-Sonic weld of PTFE disc



The “**Genuine Porex®**” label is a promise that this product has been rigorously designed and tested to meet the highest standards of performance.

If it's not Porex, it's not Genuine.



Porex Corporation
500 Bohannon Road, Fairburn, GA 30213 USA
T. +1 770 964 1421 F. +1 770 969 0954
electronics@porex.com

porex.com

Porex Technologies GmbH
Strangerhäuschen 30, 52070 Aachen, Germany
T. +49 241 910525-0 F. +49 241 910525-16
info.europe@porex.com

800.241.0195

Porex Technologies Sdn Bhd
Lot P.T. 74, Jalan Hulu Tinggi 26/6, Seksyen 26, Sektor A
Hicom Industrial Park, 40400 Shah Alam, Selangor Malaysia
T. +603 5191 3308 F. +603 5192 3308
info.asia@porex.com