



Absorb



Apply



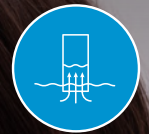
Diffuse



Filter



Vent



Wick

# SALIVA COLLECTION MEDIA

Faster and more accurate test results

## Ideal capillary structure for controlled absorption speed

- Short loading time, high loading capacity, and high recovery of sample
- Precisely regulated and controlled for consistent results
- No assay interferences

## High-purity materials deliver more accurate results

- CERTIFIED PURE POREX® material options for improved sensitivity and specificity of test results
- Stays soft when wetted for improved patient comfort
- Effective at mucus removal and oral fluid viscosity reduction with no leakage
- Excellent recovery of THC and other analytes for drugs-of-abuse testing

## Materials ideal for:

- Point-of-care tests
- Patient self-tests
- Drugs-of-abuse tests
- Infectious Disease tests

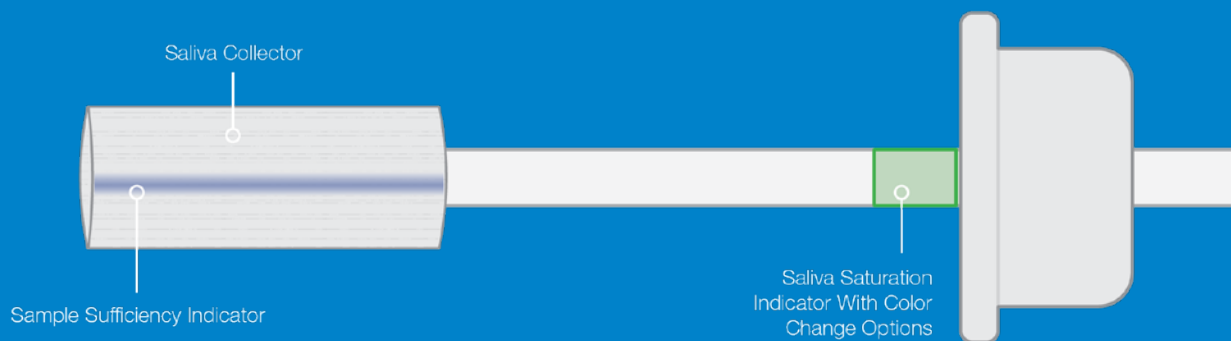
## Proprietary method assurance and sample indication technology options

- Increase recovery rates with extraction buffer options, material pre-treatments, and sample sufficiency indication
- Customized to meet a variety of outcomes
- Tailored to meet the correct fit, absorption speed, liquid flow direction and dimensions depending on the requirements



Saliva Collection Media

# Saliva Collection Media



## Saliva collection media

Porex Sample Number	Material	Hydrophobic Or Hydrophilic	Shape (as tested)	Size (as tested)	Basis Weight (g/m <sup>2</sup> )	Wicking Rate (sec/length)	Wicking Rate (sec/cc)	H <sub>2</sub> O Absorption (mg/cm <sup>2</sup> )	Density (gm/cc)	Calculated Porosity %	Absorbency Measured Porosity %
SC-714	PP/PE	Hydrophilic	Cylindrical Wick	2.6 D x 24 L mm	N/A	5.3	41.15	N/A	0.36	60%	91%
SC-10418	PP/PE	Hydrophilic	Cylindrical Wick	11.2 D x 30.1 L mm	N/A	3.3	1.12	N/A	0.07	92%	71%
SC-27111	PP/PE	Hydrophilic	Cylindrical Wick	10 D x 29.9 L mm	N/A	4.0	1.69	N/A	0.08	91%	75%
SC-28782	PP/PE	Hydrophilic	Rectangular Wick	1.45T x 30.3W x 40.34 Lmm	16	20.0	11.52	115	0.01	99%	82%

## Saliva collector with sample sufficiency indicator

Porex Sample Number	Material	Hydrophobic Or Hydrophilic	Shape (as tested)	Size (as tested)	Basis Weight (g/m <sup>2</sup> )	Wicking Rate (sec/length)	Wicking Rate (sec/cc)	H <sub>2</sub> O Absorption (mg/cm <sup>2</sup> )	Density (gm/cc)	Calculated Porosity %	Absorbency Measured Porosity %
SCI-417	PP/PE	Hydrophilic	Cylindrical Wick	12.6 D x 30 L mm	N/A	3.7	0.98	N/A	0.08	91%	69%

### AMERICAS

T. +1 770 964 1421  
info.porex.amrs@filtrationgroup.com

### EUROPE

T. +49 241 9105250  
info.porex.emea@filtrationgroup.com

### ASIA PACIFIC

T. +603 5191 3308  
info.porex.apac@filtrationgroup.com

### CHINA

T. +86 574 2685 8761  
info.porex.china@filtrationgroup.com



WWW.POREX.COM

©2020 Porex Corporation. Porex and CERTIFIED PURE POREX are registered trademarks of Porex Corporation. All Rights Reserved.